

# Keysight Technologies

## FET Characterization Using the B2900A Series of SMUs

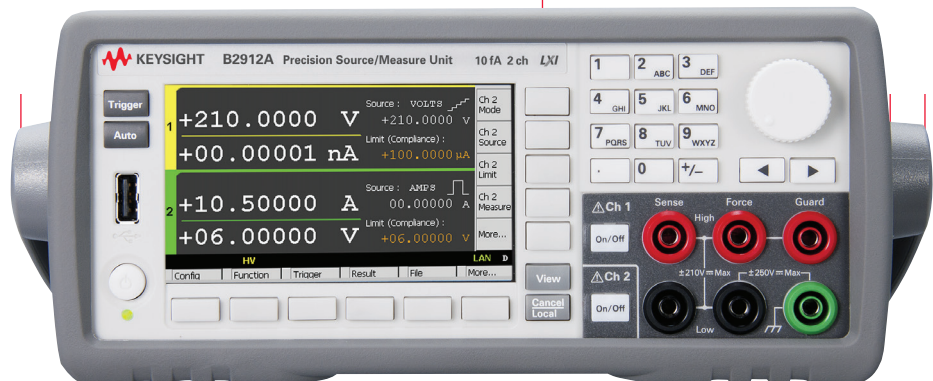
Keysight B2901A Precision SMU, 1ch, 100 fA resolution, 210 V, 3A DC/10.5 A pulse

Keysight B2902A Precision SMU, 2ch, 100 fA resolution, 210 V, 3A DC/10.5 A pulse

Keysight B2911A Precision SMU, 1ch, 10 fA resolution, 210 V, 3A DC/10.5 A pulse

Keysight B2912A Precision SMU, 2ch, 10 fA resolution, 210 V, 3A DC/10.5 A pulse

### Application Note





## Introduction

The Keysight Technologies, Inc. B2901/02/11/12A Precision Source/Measure Unit is compact and cost-effective bench-top Source/Measure Unit (SMU) with the capability to output and measure both voltage and current. They cover currents from 10 fA to 3 A (DC)/10.5 A (pulse) and voltages from 100 nV to 210 V, which enables you to make a wide range of current versus voltage (IV) measurements more accurately and quickly than ever before. In addition, the B2900A Series of SMUs comes with an intuitive graphical user interface (GUI) and multiple free software control options that make it easy for you to begin making productive measurements immediately, allowing you to choose the solution that best fits your particular application. These features make the B2900A Series of SMUs the best solution for accurate characterization of a wide variety of devices such as field effect transistors (FETs).

## What is the B2900A Series of SMUs?

An SMU combines the capabilities of a current source, a voltage source, a current meter and a voltage meter along with the capability to switch easily between these various functions into a single instrument. This gives it the ability to evaluate the IV characteristics of devices across all four measurement quadrants without the need for any additional equipment.

Besides being able to output and measure voltage or current very accurately, SMUs also possess a compliance feature that allows a limit to be placed on the voltage or current output to prevent device damage. The members of the B2900A Series of SMUs are single or dual channel SMU units that offer a wide range of IV measurement capability for a variety of two-terminal and three-terminal devices. They cover currents from 10 fA to 3 A (DC)/10.5 A (pulse) and voltages from 100 nV to 210 V. In addition to their DC operation mode, the B2900A Series of SMUs also has the ability to perform pulsed measurements in order to prevent device self-heating from distorting the measurement results.

In general, FET evaluation requires applying different voltages and currents with the constant or the sweep condition to the gate and the drain terminal respectively in order to acquire the several parameters and characteristics.

The B2902A and B2912A have two SMU channels, with each channel possessing accurate IV measurement capabilities as well as the ability to supply either constant or swept voltage/current. This makes the B2902A and B2912A excellent choices for accurate IV FET characterization. As shown in Figure 1, you can easily measure three terminal devices with the B2902A and B2912A.

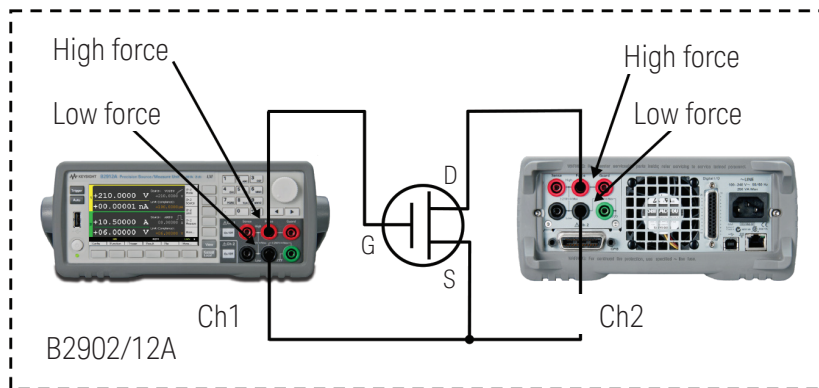


Figure 1. Using the B2902/12A to characterize a field effect transistor

## Quick and Easy IV Characterization

During routine device evaluation it is often desirable to make a quick measurement from the instrument's front panel without having to go through the time and trouble of writing a test program. To meet this need, the B2900A Series of SMUs has a resident GUI that makes it easy to perform a variety of tests and save measurement data without having to write any code.

The wide QVGA LCD display of the B2900A Series of SMUs supports an easy-to-use GUI that provides easy instrument control from the front panel. The GUI of the B2900A Series of SMUs has the following multiple viewing modes: Single View, Dual View, Graph View and Roll View (for viewing time domain measurements). Single View mode allows you to easily set up not only constant voltage and current measurements but also swept voltage and current measurements for a single SMU channel. Dual View can perform similar functions for both channels simultaneously (for B2902A and B2912A). After measurement completion you can use the front panel GUI to graphically view measurement results such as IV curves using Graph View, and display a list of the measurement data using the Measure Result dialog window (please see Figure 2).

The B2900A Series of SMUs has a USB interface on the front panel so that a USB flash memory device can be used with the B2900A Series of SMUs to save and load measurement setups as well as to save measurement results. In addition, Graph View supports a Screen Dump function that enables you to save screen images (such as IV curves) to any attached USB flash memory device as JPEG files, making it easy to include graphical results in reports and presentations (please see Figure 3).

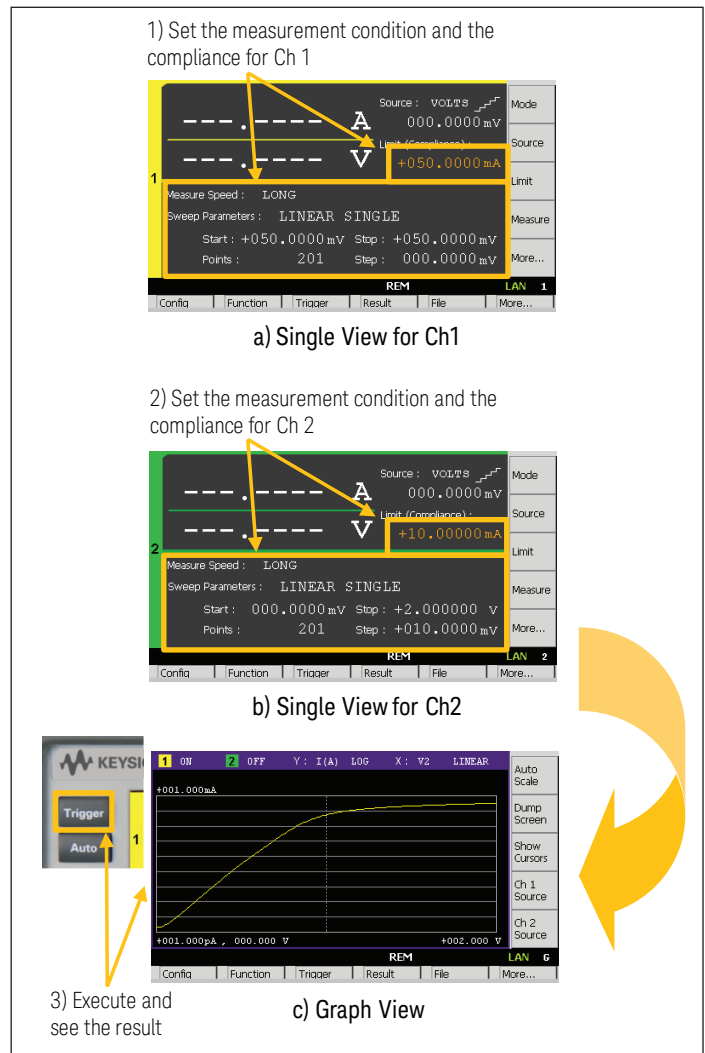


Figure 2. The GUI of the B2900A Series of SMUs makes it easy to take a quick measurement and display the results

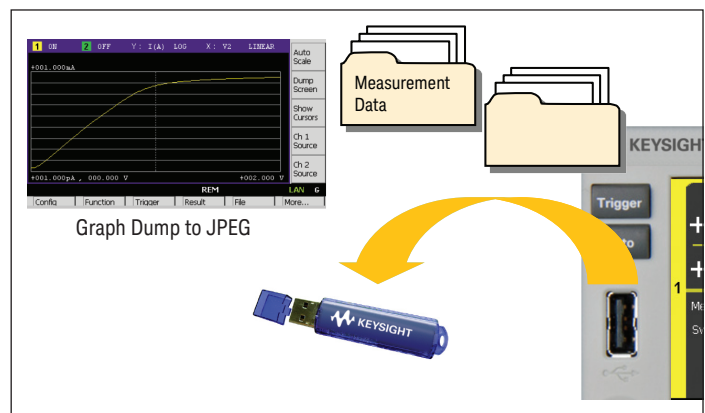


Figure 3. Measurement results and measurement setups can be saved to any attached USB flash memory device

## A Range of Free Software Control Options

In addition to its powerful and easy-to-use GUI, if you prefer PC-based instrument control, then the B2900A Series of SMUs comes with a range of free software control options to facilitate program development, allowing you to choose the solution that best fits your particular application.

### BenchVue

The Keysight BenchVue software for the PC reinvents your bench testing by making it simple to connect and record results with your instruments without the need for programming. You can quickly and easily obtain results by viewing, logging and exporting measurement data and screen images with just a few mouse clicks. BenchVue provides a wide array of capabilities, depending on the chosen instrument application. These capabilities will vary according to the functionality of the instrument types and models, including the B2900A Series of SMUs, that are connected to the PC that is running the BenchVue software.

See <http://www.keysight.com/find/benchvue> for more details.

### Graphical Web Interface

The Keysight B2900A Graphical Web Interface provides functionality to allow access to the B2900A Series of SMUs over a LAN connection. The B2900A Series of SMUs is fully compliant with the LXI class C specification and contains a web server that provides a webpage with an interface to support the basic measurement functions of the B2900A. You can quickly and easily make measurements using a standard web browser by simply connecting the B2900A Series of SMUs to a PC using a LAN cable.



Figure 4. BenchVue and Graphical Web Interface

## Quick I/V Measurement Software

The Keysight B2900A Quick I/V Measurement Software is a common software solution for the entire B2900 precision instrument family. It has powerful measurement capabilities to control the B2900A Series of SMUs over GPIB, USB or LAN connections (see Figure 5). You can download this PC-based software for free from <http://www.keysight.com/find/quickiv>. The Keysight B2900A Quick I/V Measurement Software also supports a variety of functions such as a sweep measurement, a sampling measurement, basic math functions, graphical display functions and the ability to save test results as CSV files.

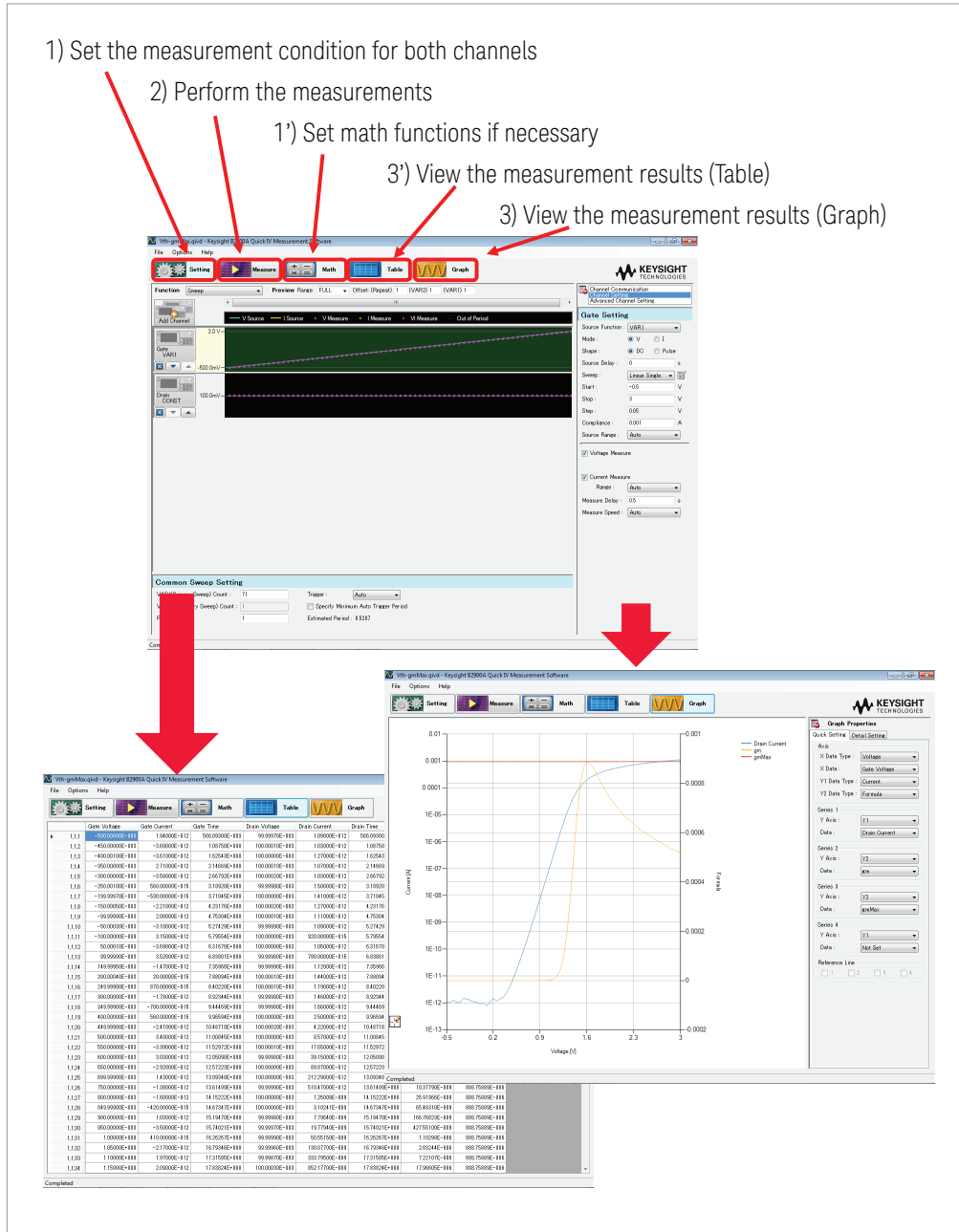


Figure 5. It is easy to make a quick measurement on a PC using the Keysight B2900A Quick I/V Measurement Software

## EasyEXPERT group+

The EasyEXPERT group+ software is the more powerful solution for detailed characterization and analysis of devices, circuits and materials. It supports efficient and repeatable characterization across the entire characterization process from measurement setup and execution to analysis and data management. EasyEXPERT group+ makes it easy to perform complex characterization with ready-to-use furnished measurements (application tests), and gives you the option of automatically storing every test condition and piece of measurement data in a unique built-in database (workspace), ensuring that valuable information is not lost and that measurements can be repeated at a later date. See <http://www.keysight.com/find/easyexpert> for more details.

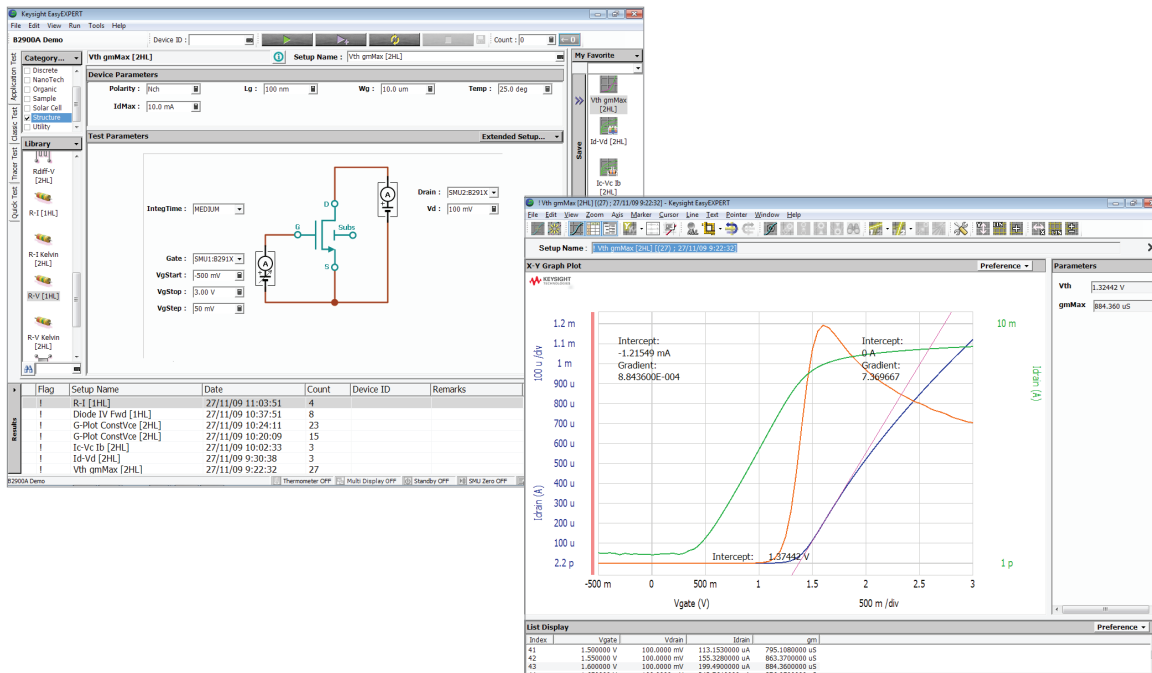


Figure 6. EasyEXPERT group+ is a powerful solution for detailed characterization and analysis of devices, circuits and materials

## Summary

The Keysight B2901/02/11/12A Precision Source/Measure Unit is the best solution for IV characterization of FETs and a variety of other devices. Its wide current and voltage measurement ranges (from 10 fA/100 nV to 10.5 A/210 V) provide superior measurement performance and allow you to characterize devices more accurately and easily than ever before.

The easy-to-use GUI of the B2900A Series of SMUs has a variety of capabilities and features that make it easy to take measurements quickly and to save both the measurement setup conditions and data to USB-based flash memory devices.

In addition to being able to control the B2900A Series of SMUs remotely over GPIB, USB and LAN interfaces, Keysight offers multiple free software control options to facilitate program development if you prefer PC-based instrument control, allowing you to choose the solution that best fits your particular application.

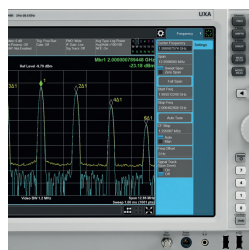
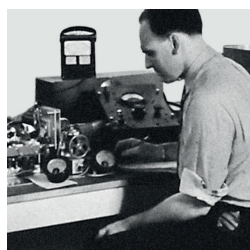
For more detailed information on the various models of the B2900A Series of SMUs, please refer to the data sheet of the B2900A Series of SMUs (5990-7009EN).

The B2900A Series of SMUs enables you to quickly debug and accurately characterize a wide variety of devices using only a single bench-top SMU.



## From Hewlett-Packard through Agilent to Keysight

For more than 75 years, we've been helping you unlock measurement insights. Our unique combination of hardware, software and people can help you reach your next breakthrough. **Unlocking measurement insights since 1939.**



1939

THE FUTURE

### myKeysight

### myKeysight

[www.keysight.com/find/mykeysight](http://www.keysight.com/find/mykeysight)

A personalized view into the information most relevant to you.

### Keysight Assurance Plans

[www.keysight.com/find/AssurancePlans](http://www.keysight.com/find/AssurancePlans)

Up to ten years of protection and no budgetary surprises to ensure your instruments are operating to specification, so you can rely on accurate measurements.

### Keysight Infoline

[www.keysight.com/find/service](http://www.keysight.com/find/service)

### Keysight Infoline

Keysight's insight to best in class information management. Free access to your Keysight equipment company reports and e-library.



For more information on Keysight Technologies' products, applications or services, please contact your local Keysight office. The complete list is available at: [www.keysight.com/find/contactus](http://www.keysight.com/find/contactus)

### Americas

Canada	(877) 894 4414
Brazil	55 11 3351 7010
Mexico	001 800 254 2440
United States	(800) 829 4444

### Asia Pacific

Australia	1 800 629 485
China	800 810 0189
Hong Kong	800 938 693
India	1 800 11 2626
Japan	0120 (421) 345
Korea	080 769 0800
Malaysia	1 800 888 848
Singapore	1 800 375 8100
Taiwan	0800 047 866
Other AP Countries	(65) 6375 8100

### Europe & Middle East

Austria	0800 001122
Belgium	0800 58580
Finland	0800 523252
France	0805 980333
Germany	0800 6270999
Ireland	1800 832700
Israel	1 809 343051
Italy	800 599100
Luxembourg	+32 800 58580
Netherlands	0800 0233200
Russia	8800 5009286
Spain	800 000154
Sweden	0200 882255
Switzerland	0800 805353
	Opt. 1 (DE)
	Opt. 2 (FR)
	Opt. 3 (IT)
United Kingdom	0800 0260637

For other unlisted countries:  
[www.keysight.com/find/contactus](http://www.keysight.com/find/contactus)  
(BP-12-01-15)



[www.keysight.com/go/quality](http://www.keysight.com/go/quality)

Keysight Technologies, Inc.

DEKRA Certified ISO 9001:2008

Quality Management System

## B2900 Precision Instrument Family

The B2900 family contains products that perform both precision sourcing and precision measurement. [www.keysight.com/find/b2900a](http://www.keysight.com/find/b2900a)



## Keysight Precision Current-Voltage Analyzer Series and Power Device Analyzer Series

Keysight also offers a variety of analyzers which ensure accurate and efficient current-voltage measurements that give a clear insight into IV characteristics across a wide range of applications. [www.keysight.com/find/analyzer](http://www.keysight.com/find/analyzer)



Unlocking Measurement Insights

This information is subject to change without notice.

© Keysight Technologies, 2013 - 2015

Published in USA, December 15, 2015

5990-6587EN

[www.keysight.com](http://www.keysight.com)